

Birmingham

FOUNDATION EQUIPMENT

CASING OSCILLATOR



Purpose:

Installation tool for large bored piles.

Special Quality Fabrication Measures:

The entire upper clamping collar is normalized after welding in order to relieve the internal stress.

The holes on the upper clamping collar are machined post normalizing.



Technical data

Description	SCO150	SCO200	SCO250	SCO300	SCO330
Lifting stroke (mm)	600	600	650	650	650
Lifting force (kN)	2050	2750	5150	7250	9100
Clamping force (kN)	0	1	1	3	2
Rotation angle	25	24	25	21	24
Oscillating torque (kN-m)	2900	4265	7100	11000	13350
Weight (ton)	19	28	42	57	65

Hydraulic Power Pack

Model	SPP260	SPP360	SPP600
Engine output (hp)	260	360	600
Max.oil flow of hydraulic pumps (L/min)	2*201	3*200	2*324+252
Max.pressure (bar)	300	320	320
Oil tank (Litre)	1200	1600	1600
Fuel tank (Litre)	510	900	900
Unit Weight (kg)	7000	9500	10000

BERMINGHAM

FOUNDATION SOLUTIONS
SINCE 1897



Toll Free (Canada & USA 1.800.668.9432)

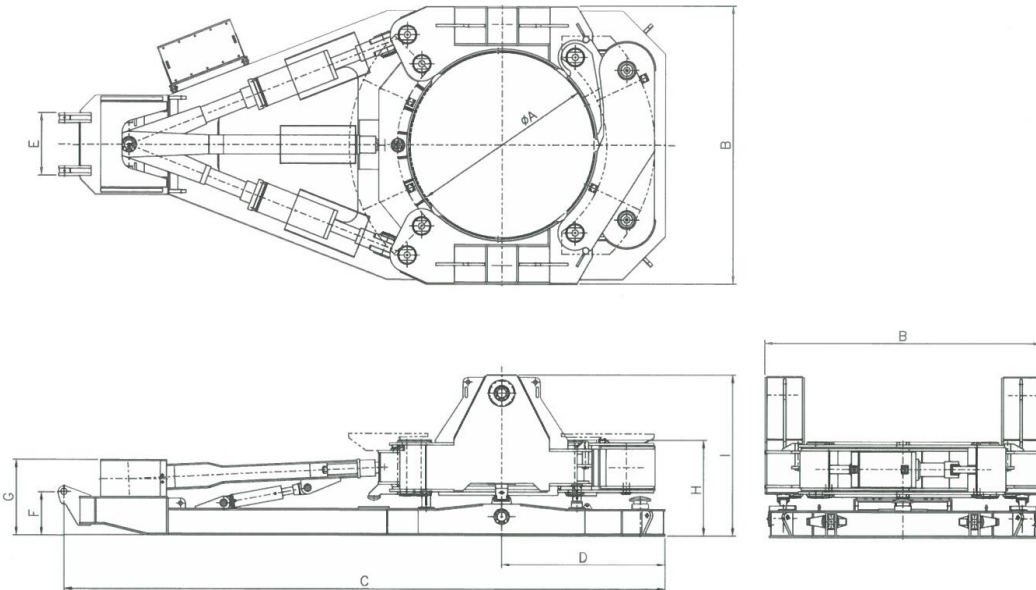
www.birminghamer.com | bfssales@birminghamer.com

Specifications

Size	Model	SCO150	SCO200	SCO250	SCO300	SCO330
A(Max. casing dia.) mm		1500	2000	2500	3000	3300
B (Width of machine)mm		2850	3200	4000	4500	4880
C (Length of machine) mm		6500	7660	8800	9805	10570
D (Min. spacing)mm		1300	1760	2230	2670	2850
E (Width of cradle)mm		1014	1014	1014	1014	1014
F (Axis excavator cradle) mm		700	700	700	700	700
G (Height of machine for excavator side) mm		900	950	1130	1225	1270
H (Height from ground to top of cradle guide) mm		1275	1275	1470	1550	1670
I (Height of machine)mm		1850	1950	2360	2610	2730

Technical data

Model	SPP175	SPP260	SPP360	SPP535	SPP600	SPP800
Dimensions	1380x3420x188 5	1800x3922x233 9	2100x4645x249 5	2100x5065x249 5	2100x5065x2495	2400x5645x305 0
Engine output (hp)	175	260	360	535	600	800
Nominal Engine Speed (rpm)	1800	1800	1800	1800	1800	1800
EPD standard	EPA/CARB Tier 2	EPA/CARB Tier 2	EPA/CARB Tier 3	EPA/CARB Tier 3	EPA/CARB Tier 3	EPA/CARB Tier 3
Max. oil flow hydraulic pumps (L/min)	2x115	2x 201	3x252	3x252	2x324+252	3x340+125
Max.pressure (bar)	320	320	320	320	320	320
Oil tank (litre)	550	1200	1600	1600	1600	1900
Fuel Tank (litre)	350	510	900	900	900	1100
Unit weight (kg)	4000	7000	9500	10000	1000	17000



BERMINGHAM

FOUNDATION SOLUTIONS
SINCE 1897



Toll Free (Canada & USA 1.800.668.9432)

www.berminghammer.com | bfssales@berminghammer.com